

PoE+

IEEE 802.3at

25W/54V (Max 420mA)

Power over Ethernet Plus

IEC 60512-99-001

Cat 6_A



Cat 6

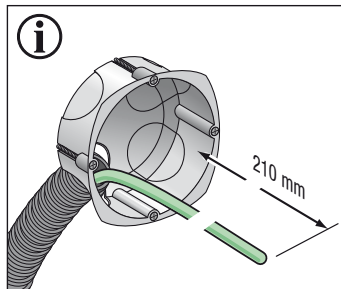
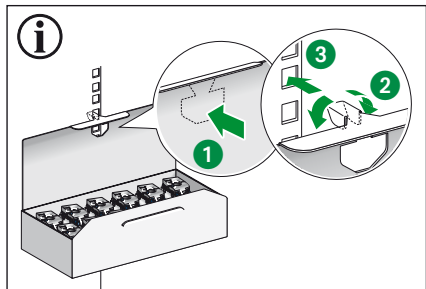
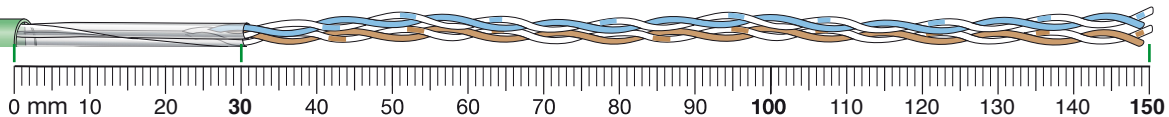


Cat 5e



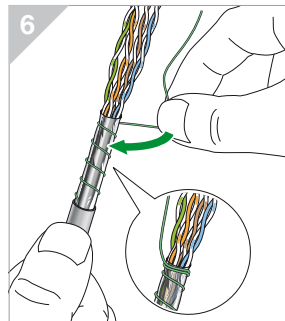
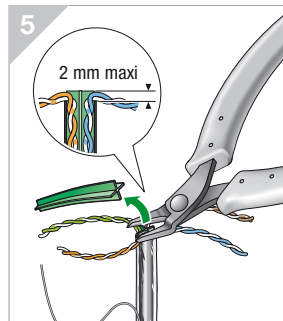
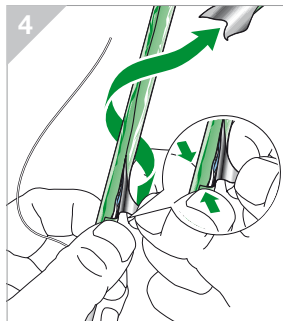
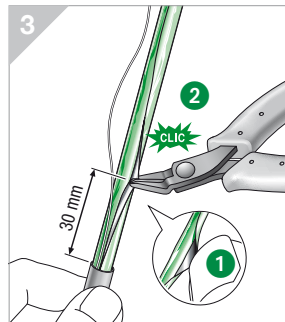
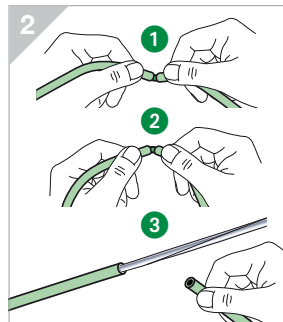
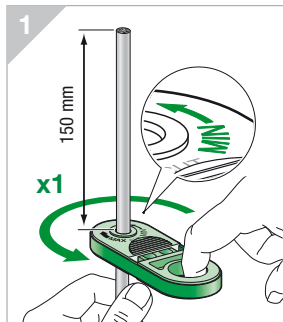
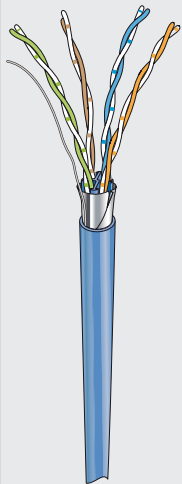
Actassi S-One Shielded

Schneider
Electric



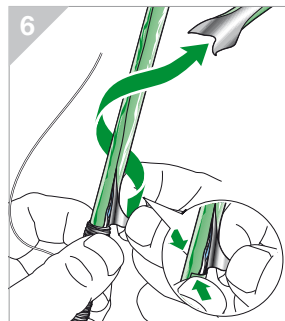
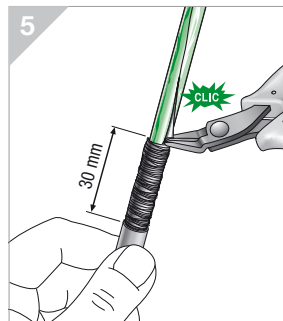
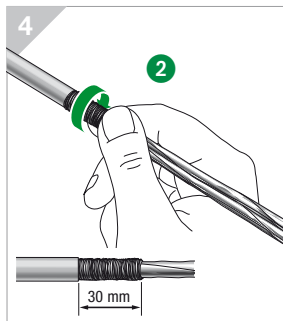
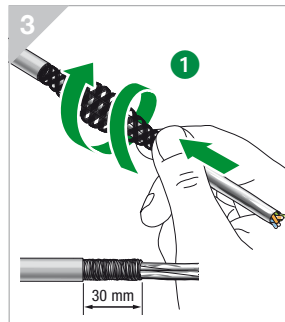
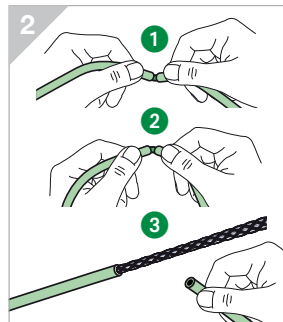
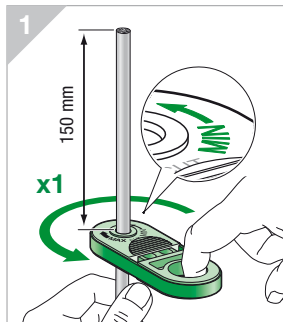
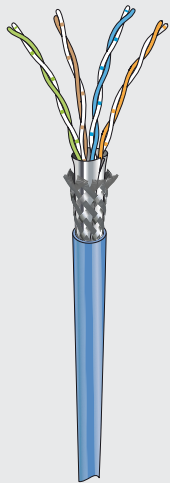
F/UTP

A



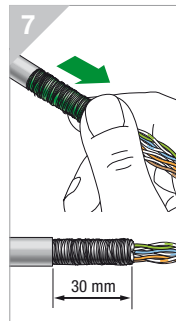
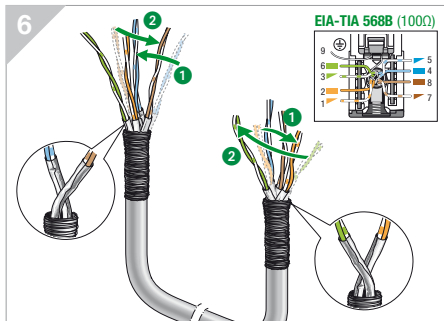
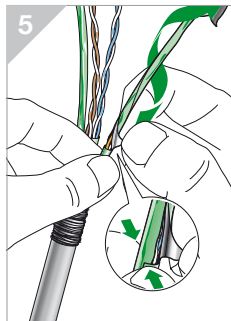
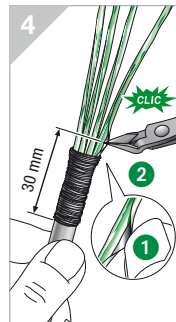
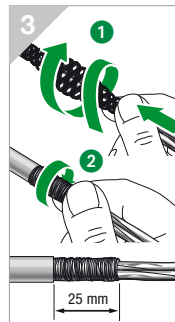
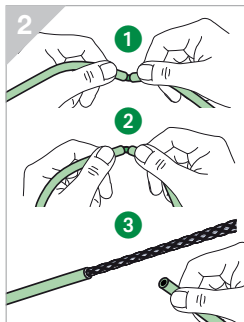
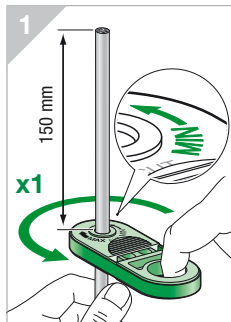
SF/UTP

A



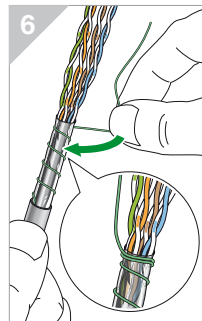
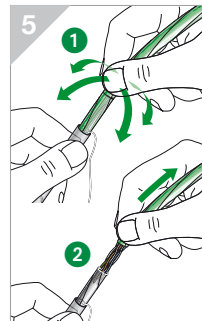
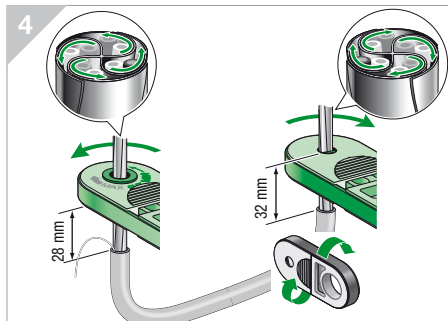
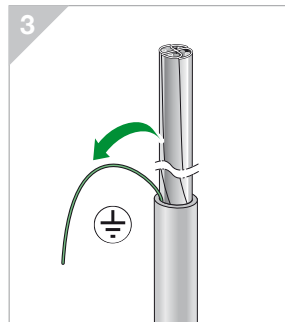
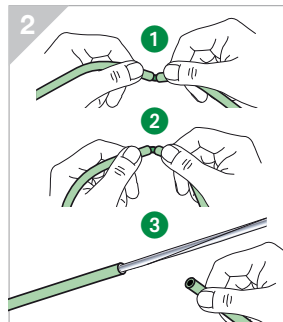
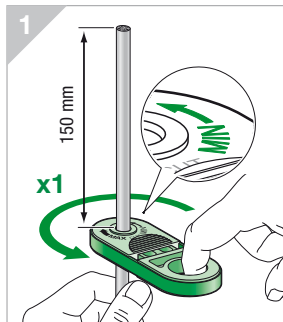
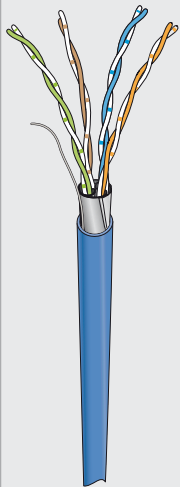
S/FTP

A



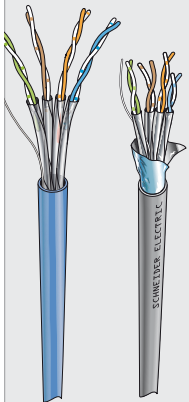
CLMX (F/FTP)

A



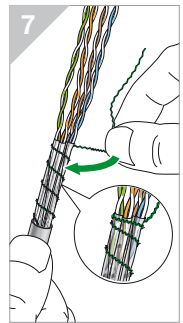
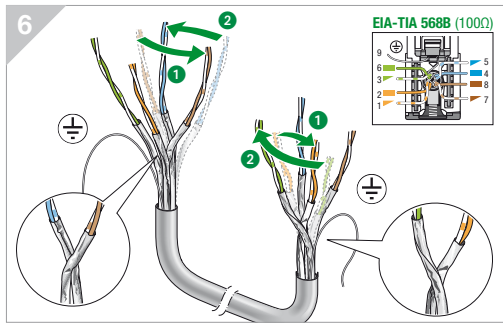
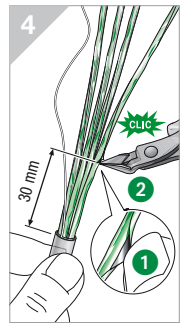
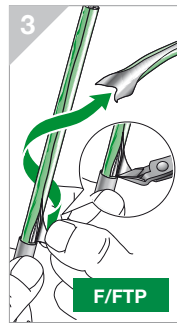
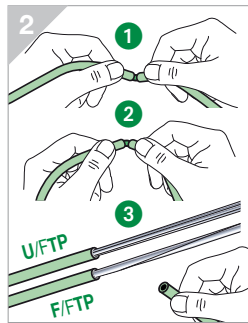
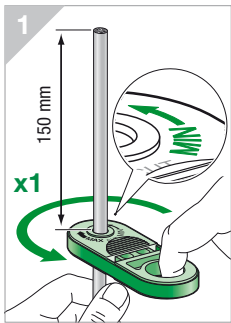
U/FTP F/FTP

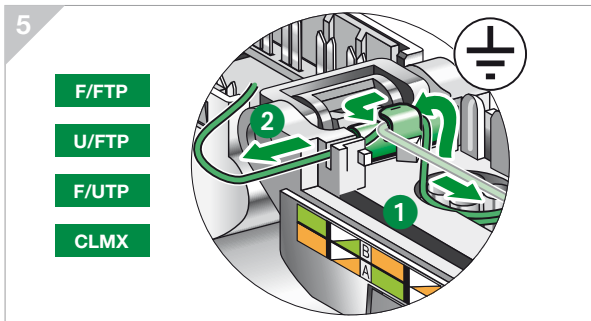
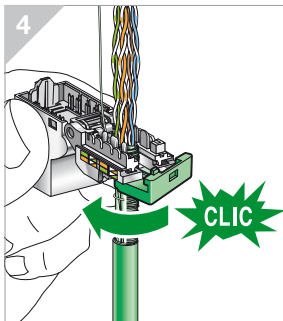
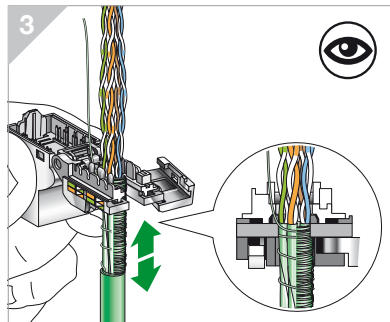
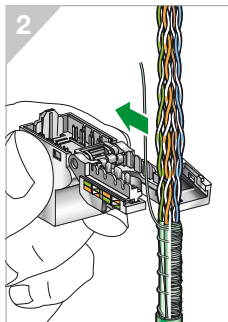
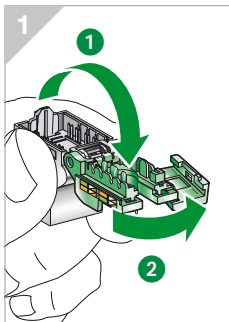
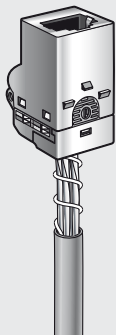
A



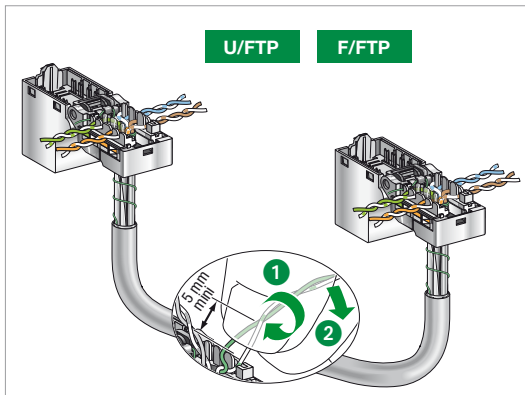
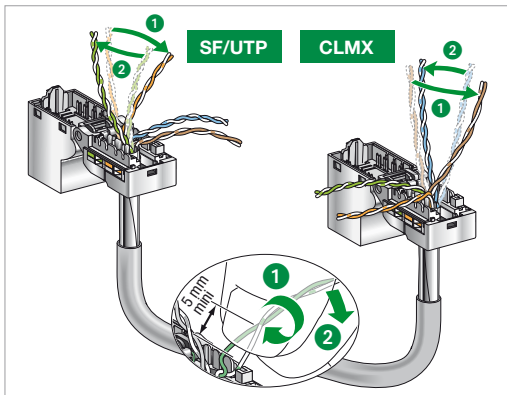
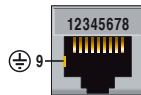
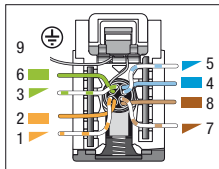
U/FTP

F/FTP

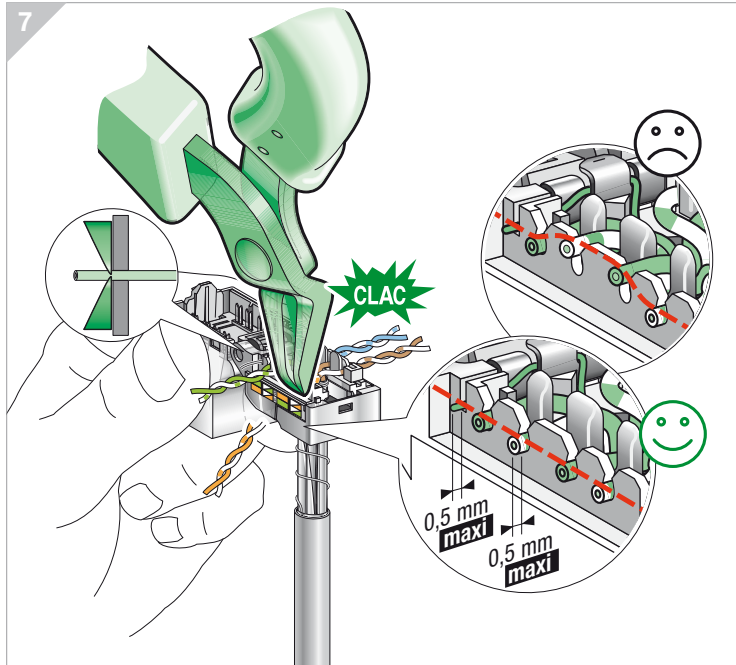


B

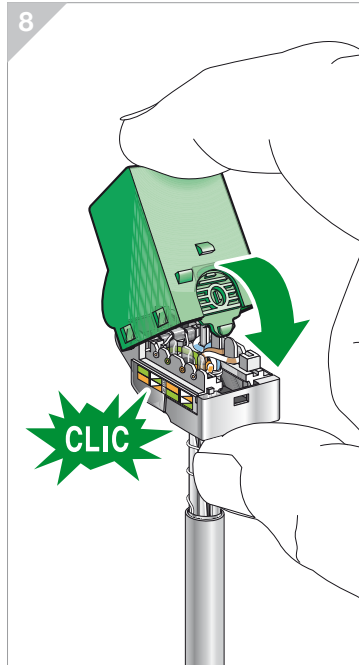
EIA-TIA 568B (100Ω)



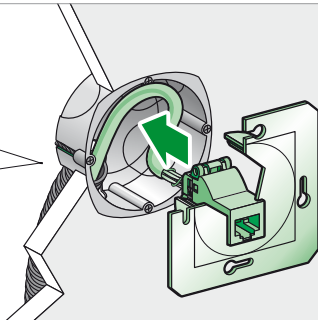
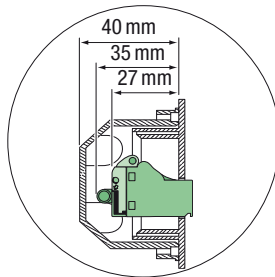
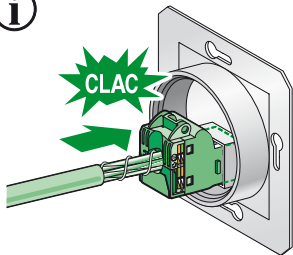
7



8



i



i

